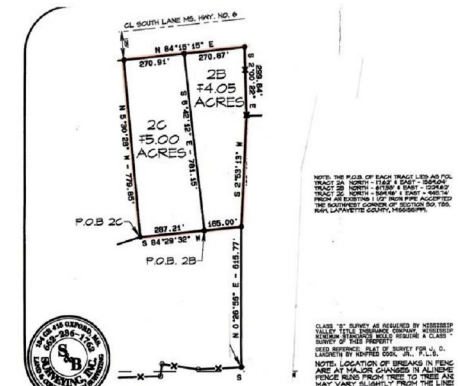


MLS #: L142772A (Active) List Price: \$149,500

---- Hwy 6 West OXFORD, MS 38655



Property Features

Area: West
Community: OXFORD
County: LAFAYETTE
Subdivision: NONE
School District: LAFAYETTE
Zoning: NO ZONING
Lot Type: Acres <10
Apx Acreage: 9.0000
Waterfront: No

Features: Electric Nearby, Phone Nearby
Electric Supplier: NEMPA
Street Construction: Concrete
Water: Community System
Sewer: None

Remarks: Several beautiful homesites. Great restrictions to protect neighborhood. No commercial businesses. Please note the entrance driveway from Hwy 6. Also note the crossover in front of property to the Hwy 6 West Bound lane. Please see the revised Restrictions under Other Documents in the Tools Menu.

Information Herein Deemed Reliable but Not Guaranteed All Measurements are Approximate.
MLS #: L142772A