

# Expanded View

Features: Cable TV Nearby, Electric at Property, Natural Gas Nearby, Phone at Property

Electric Supplier: TVEPA

Street Construction: Asphalt

Water: City

Sewer: City

Remarks: This acreage will be determined by final survey, Can be 1 or more acres as negotiated.

Currently zoned AGRI, This is part of a larger tract that has not been subdivided at this time. Located just across the street from the beautiful Cross. Has great view from I-55.

Directions: From Hwy 6 go past Wall Mart it will be on the left on House Carson Drive





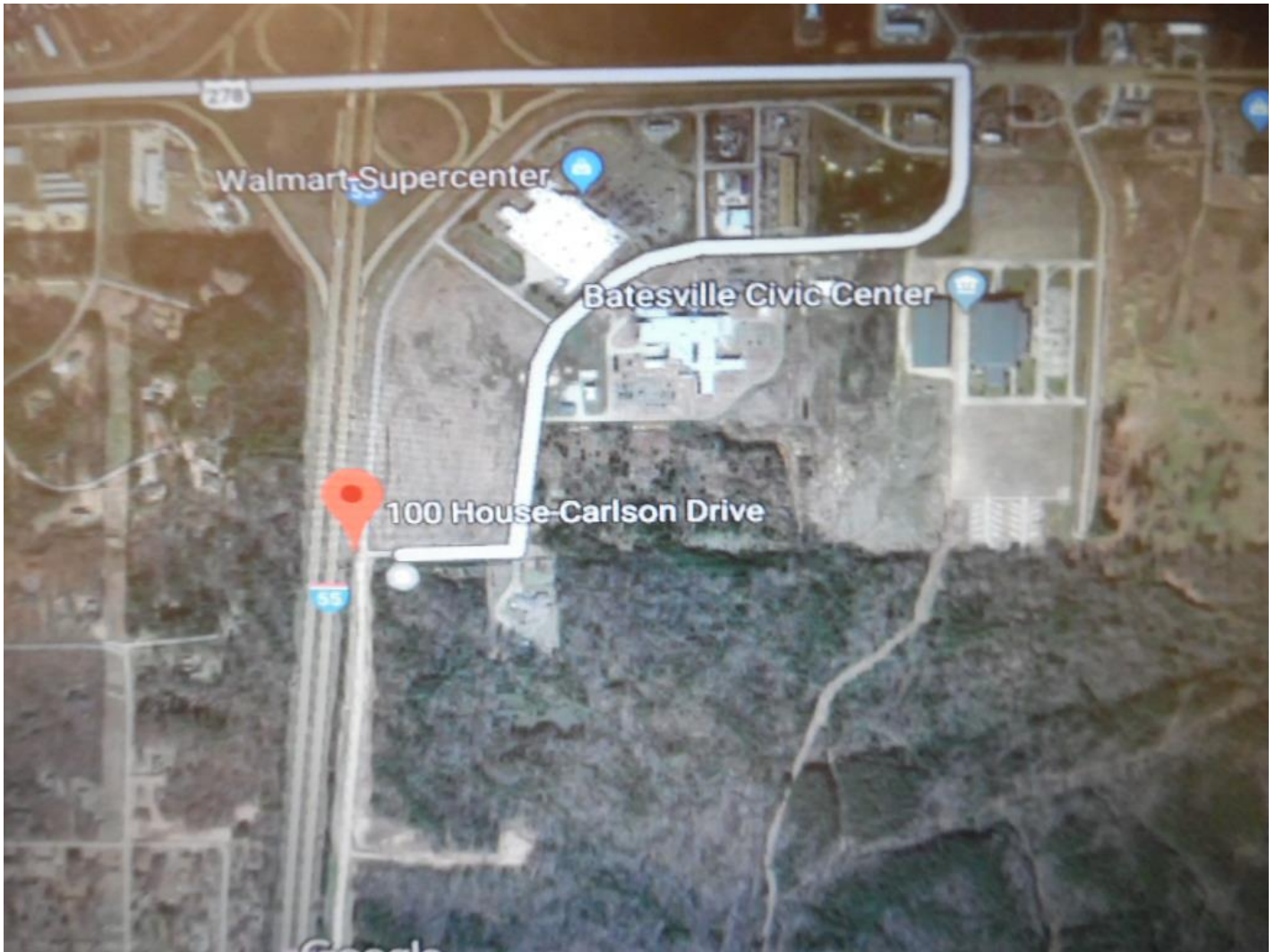












Information Herein Deemed Reliable but Not Guaranteed  
All Measurements are Approximate. 12,0